



*Children first
every time!*





*Our children learn
through play*

Welcome to Thrive Childcare and Education

We are delighted that you have chosen to enrol your child in a Thrive Nursery and we are excited to embark on this journey of early childhood development with you and your family. Everyone at Thrive is passionate about creating a nurturing yet stimulating environment where all children can reach their potential.

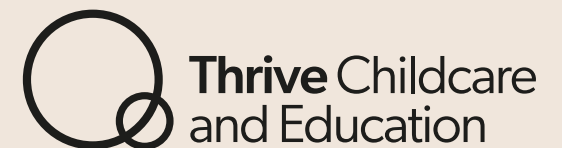
At Thrive, we all believe in the power of play-based learning, fostering fun, creativity, and encouraging exploration and discovery. We are developing our outside environments too so we can offer our children the best opportunities to grow whilst enjoying and learning about the benefits of the world around them. We believe that spending time outside on a daily basis helps keep children physically fit and healthy. Encouraging children to run, jump, climb and stretch develops good fitness, cardiovascular health and co-ordination as well as helping aid all round development in readiness for school and life beyond. We also take part in the Daily Mile which you might have read about more recently!

Our dedicated teams are committed to providing safe, engaging and enriching experiences for every child in our care. We ensure that all our environments are risk assessed and our meals are carefully balanced and nutritious. We see ourselves as partners with you in supporting your child's growth and development during these crucial early years.

We would like to encourage you to get in touch if you have any questions and also if you would simply like to find out more about the opportunities that we offer.

We look forward to building a strong and positive relationship with you and your child.

Thrive Childcare and Education



What we offer at Thrive Nurseries



Wipes

The wipes we provide in our nurseries are hypoallergenic and gentle for your children.



Nappies

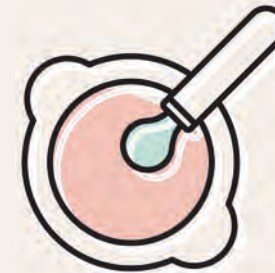
Hypoallergenic nappies are provided and changes are regular throughout the day.



Milk

Formula milk is provided for babies under one year, we can supply a number of brands, do speak to your management team for more information. You are encouraged to bring any prescribed milk into nursery as per your child's individual requirements

Cows milk and non dairy alternatives are offered for all children.



Food

Appetising and nutritious meals are provided at nursery each day including breakfast, lunch, light tea and snacks. We cater for all dietary requirements and our team are happy to meet with you to discuss these at any time.



The Thrive approach to learning

Our principles

There are 8 fundamental principles underpinning our approach to learning. We believe that these principles are essential to us providing a holistic experience for all children that supports and promotes every aspect of children's learning, development and wellbeing.

- Children learn through play
- Children develop with the freedom to explore, experiment and test
- Children learn respect and empathy by receiving it
- Children learn to be kind, loving and careful by observing it
- Children learn new skills and talents by being exposed to endless opportunities and challenges
- Children's mental and physical health are inextricably linked
- All children should receive help to recognise their potential
- Children have fundamental rights outlined in the UNCRC that must be respected at all times.



What makes us unique

The Three Components of the Thrive Ethos

Three core components each as vital as the other, when nurtured, act as strong foundation for children to learn, develop and thrive for the long term.

My Body

Physical health and physical development are vital for children to be in a comfortable state, able to fully access experiences and readiness to participate, explore and learn. A healthy body requires movement, nutrition, hydration and protection from illness and harm to thrive.

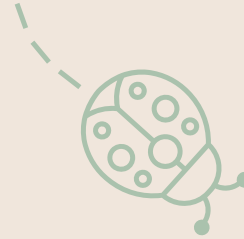
My Brain

We know that that the first five years are a crucial period for children's developing brains as 90% of growth takes place during this time. Strong attachments and exposure to a wide variety of sensory experiences and language are essential to laying the foundations for learning and development as well as informing the personality and potential of each unique child.

My World

Children's life experiences are unique to them so what they see as 'their world' will be different from others. As such, our curriculum must take into account that children's needs and next steps may be supported in different ways and diversity is to be celebrated and shared to enhance everyone's life experience. Factors that contribute to children's unique world include; my identity, my family, my home, my experiences, my additional needs, my culture, my friends and my community.

This Component also considers our shared world; our planet, and the duty we have to ensure children are given the knowledge and skills that will promote the future sustainability of it. Children must access and spend time in nature in order to understand how to care for it.



Teaching and Learning at Thrive

Our early years practitioners hold a range of qualifications from apprenticeships to post graduate degrees, with many practitioners having specialist skills and interests through attending various courses.

All are considered as teachers in the context of early years. This diversity is important in order that the children we care for have access to many different skill sets and experiences and the nurseries can continue developing and adapting to best support the children in their care.

Teaching and learning takes place through play and routine at Thrive. Each nursery will have their own 'Curriculum Intent' or 'Curriculum Rationale' which reflects the uniqueness of the setting whilst still operating under the wider, Thrive ethos and values.



We have a unique approach to education with an emphasis on nature and the outdoors





Together we Thrive

Parents as Partners

At Thrive Childcare and Education we recognise that parents are children's first and most important educators. As such, we believe that it is vital for parents and practitioners to form strong relationships and work together so that children receive the best possible quality care and education tailored to them. Regular two-way communication, mutual trust and understanding is key to this effective partnership working.

Key Person

Our experienced teams understand the importance of developing attachments with babies and children to help them feel safe and secure, which in turn will help them settle more each time they come to nursery. This is why we adopt a Key person and buddy Key person system who will plan for this accordingly. This simply means that whilst your child will develop bonds and attachments with all their carers, they will be assigned a specific carer who will take responsibility for children's care needs and developmental progress.



Our experienced team understand the importance of developing attachments with babies



*We promote a calm,
unrushed and 'home
from home' experience*

Food and Drink at Thrive

A healthy and nutritious diet is essential to children's developing bodies and brains.

Children can enjoy breakfast, lunch and a light tea during their day at nursery. Your child's nursery will be able to share an example of their weekly menu.

We promote a calm, unrushed and 'home from home' experience for children during mealtimes and use this time to support them in developing their independence and self-esteem.

If your child has a specific dietary requirement, we will discuss this with you to ensure your child always receives the right foods for them.

We will work closely with you throughout your babies weaning stage to ensure foods and textures are introduced at a pace that is safe for them.

Healthy snacks and fresh drinking water will be available to your child throughout the day.





*We make your
child's health
and safety our
top priority*

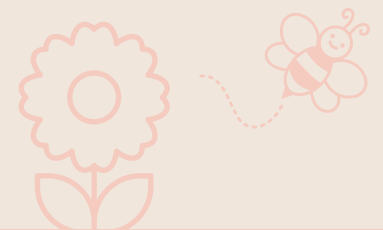
Health and Safety

At Thrive Childcare and Education, we make your child's health and safety our top priority.

We maintain comprehensive Health and Safety practices, ensuring our nurseries are fully compliant with regulatory standards.

All of our early education and nursery settings include:

- The highest level of care and supervision from our experienced teams
- Secure entry systems to keep your child safe
- Daily cleaning of all rooms and surfaces including toys, child furnishings, changing areas, and food spaces
- Strict hand-washing and sanitary policies to prevent the spread of germs
- Curriculum that emphasises healthy practices for children.





We have highly skilled and experienced teams

Why choose us?

- Our values
- Unique ethos and approach to learning
- Enriched outdoor learning environments
- Highly skilled and experienced teams
- Fully inclusive childcare

At Thrive, our goal is to prepare children, not only for school, but for the rest of their lives as conscientious, talented and unique individuals who will be the future custodians of our planet.

We believe that children's all-round development and well-being requires strong foundations that Thrive can provide so that all children can reach their full potential.



Get in touch

Contact us

Email: enquiries@thrivechildcare.com

Web: www.thrivechildcare.com

Let's stay social!

Follow us on social media to keep up to date with all things Thrive.



Scan for more details



Each one of our nurseries is exceptionally unique with its own special features, a personal tour is essential to capture the magic of our Thrive nurseries

